

## Properties

- Continuous connection system thanks to plug-in connectors with lip seal EPDM and mouldings
- Plug-in connection with EPDM and mouldings means no additional sealants such as silicone, sealing strips, cold adhesive strips or adhesive are necessary, no more heat loss, high level of tightness
- High level of soundproofing
- Simple, varied and quick installation thanks to the flexibility of the pipe/shallow duct
- Materials such as PE, BIO-PE, NEOPOR or EPP
- ISOflexa®-Star incombustible according to DIN 4102-A1
- ISOflexa®-Light low flammability according to DIN 4102 Temperature -40° bis + 100°)
- Material strength from 5 mm to 40 mm, standard 20 and 15 mm
- Versatile
- Environmentally friendly
- FCKW, HFCKW and cadmium-free, 100 % recyclable
- Unlimited areas of use
- Compatible with conventional spiral and aluminium flexible pipes, PVC pipes and ducts and our soundproofed wall sleeves
- No condensation formation
- Rigid and flexible
- Low weight
- UV- and ozone-resistant thanks to aluminium coating
- ISOflexa®-Light is also suitable for mirror welding
- Patented



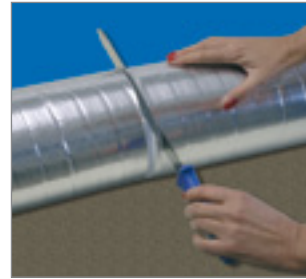
**ISOflexa®-Star**  
Use in heat pump areas



**ISOflexa®-Star and -Light**  
Use in roof area with separate space ventilation



ISOflexa® pipes can be installed with standard mounting clamps.



ISOflexa®-Light .Where required, lengths can be cut individually with a knife. The 50 mm spigot can be changed/reconnected.

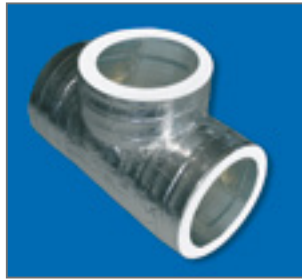
## Accessories (mouldings ready for installation)



ISOflexa®-Star Elbow  
90° / 60° / 45° / 30° and 15°  
Ø 100 / 125 / 150 / 180 / 200 mm



ISOflexa®-Star T-Piece 45°  
Ø 100 / 125 / 150 / 180 / 200 mm



ISOflexa®-Star T-Piece 90°  
Ø 100 / 125 / 150 / 180 / 200 mm



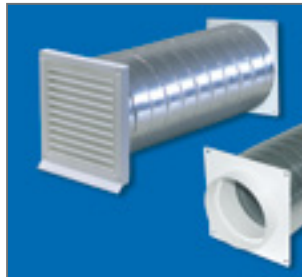
Spigot Plug Connector with lip seal (fitting size)  
Ø 100 / 125 / 150 / 180 / 200 mm



ISOflexa®-Light Flexible Bow, rotations up to 180°, length 500 mm  
Ø 100 / 125 / 150 / 180 / 200 mm



ISOflexa® Flexible Pipe / with integrated galvanised spiral duct, incombustible.



ISOflexa® Exhaust Wall Sleeve for wall strength of 500 mm  
Ø 100 / 125 / 150 / 180 / 200 mm



If necessary, the connection points in addition to special aluminum type (UV resistant) can be bonded.

Presented by:



ISOflexa GmbH & Co. KG  
Steinhausen 20  
85625 Glonn  
Tel.: +49 (0) 8093 / 904 923-0  
Fax +49 (0) 8093 / 904 923-1  
E-Mail: [Info@isoflexa.de](mailto:Info@isoflexa.de)  
Web: [www.isoflexa.de](http://www.isoflexa.de)



Probably the **best air-conditioning and ventilation pipes** in the world

## Multilayer insulated pipe systems / Duct silencers and rectangular ducts for heat pump, ventilation, air-conditioning and kitchen technology

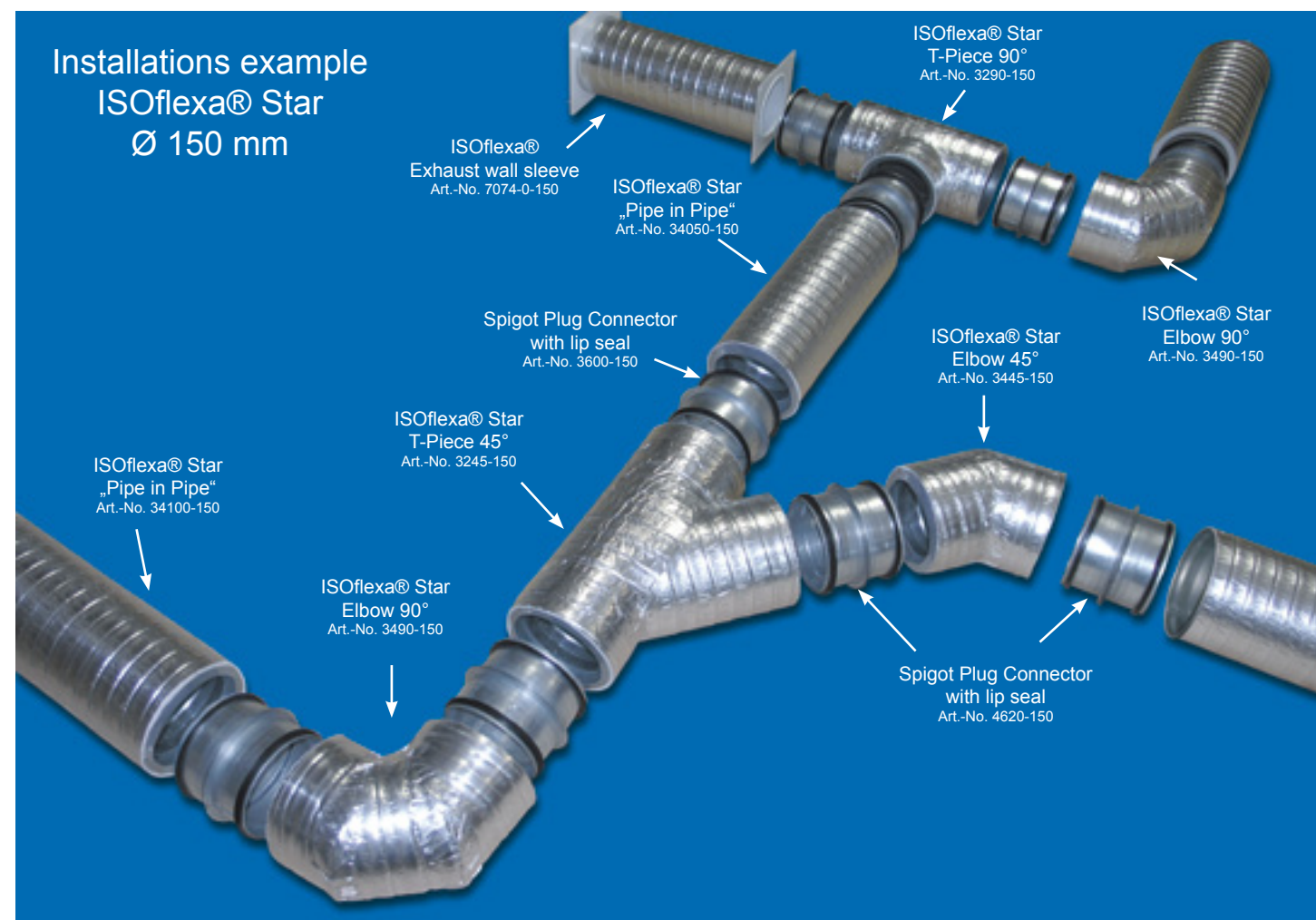
- Simple installation with a continuous connection system
- Meets requirements DIN 1946-6
- High degree of tightness thanks to lip seals
- **Prevents the formation of condensation**
- High level of soundproofing
- Ozone and UV-resistant due to aluminium coating
- ISOflexa®-Star incombustible according to DIN 4102-A1





## ISOflexa®-Star „Pipe in Pipe“ (incombustible) and ISOflexa®-Light (low flammability)

The use of the new ISOflexa® system promises the ecological heat transfer of the future, universally deployable in cooling and heating technology, geothermal heat transfer, solar heat, heat pump technology, ventilation, air-conditioning and kitchen technology, and it is characterised by the simple installation of the continuous connection system with lip seals in walls, floors, roofs, parapets, surface-mounted, in-wall, or open.

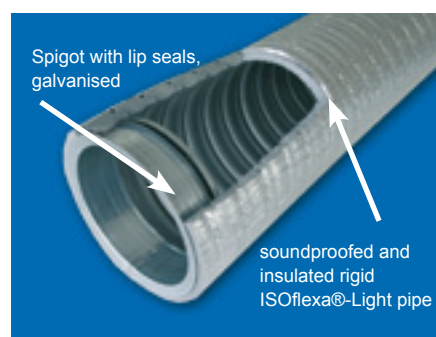


ISOflexa® pipes and ducts are currently manufactured from PE, BIO-PE, EPP or NEOPOR.

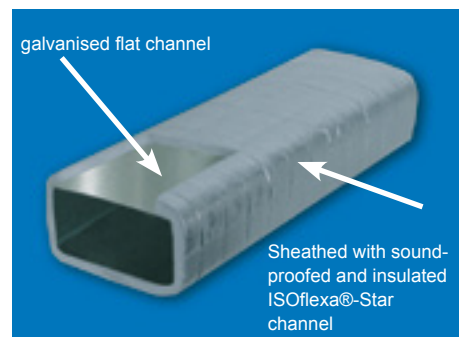
Increasingly, greater attention is being paid to the prevention of energy loss, especially heat loss. This requires good heat insulation. Good heat insulation is also particularly important for pipes that transport warm or cold media, such as exhaust ducts to be added to a heat exchanger, for example in industry. As well as heat insulation, soundproofing is also very advantageous.



ISOflexa®-Star „Pipe in Pipe“ incombustible according DIN 4102-A1, soundproofed and insulated rigid pipe with integrated galvanised spiral duct.



ISOflexa®-Light low flammability according to DIN 4102. Soundproofed and insulated rigid pipe with integrated 50 mm long spigot with lip seals left and right for the use of a plug-in connection.



ISOflexa®-Star „Flat channel in Flat channel“ incombustible according DIN 4102-A1, soundproofed and insulated rectangular rigid flat tube with integrated galvanised flat tube.

## Perfection and innovative technology as qualification

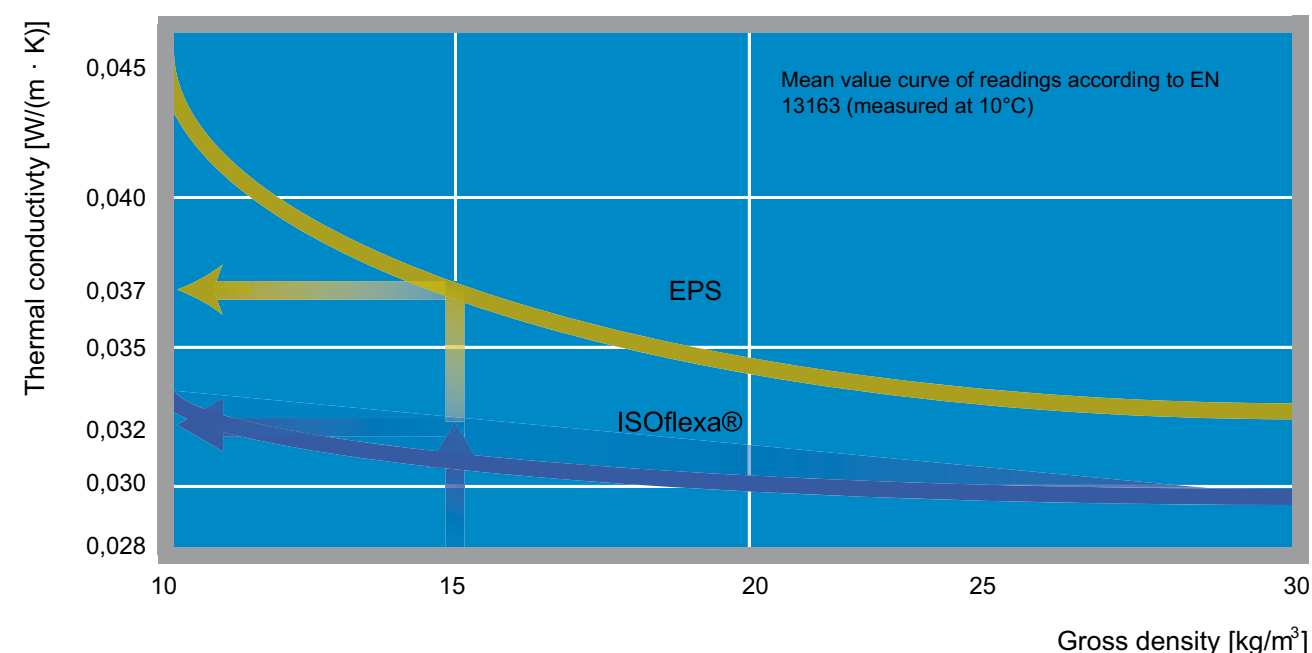
Time is money! Compared to conventional products, the simplified connection system saves installation time by up to 70%. Optimum flow properties are guaranteed thanks to greater tightness and smooth connections. Apart from the advantage that there is almost no heat loss, with hot air, exhaust, or circulating air, for example, there is the added advantage of the enclosed air transfer.

## Technical Specifications

ISOflexa®-Star / -Light standard lengths	ISOflexa® Flexible standard lengths	Internal dimensions Ø	External dimensions Ø	flow rate
0,5 m / 1 m	0,5 m / 1 m / 2 m / 3 m	100 mm	140 mm	130 m³
0,5 m / 1 m	0,5 m / 1 m / 2 m / 3 m	125 mm	165 mm	220 m³
0,5 m / 1 m	0,5 m / 1 m / 2 m / 3 m	150 mm	190 mm	320 m³
0,5 m / 1 m	0,5 m / 1 m / 2 m / 3 m	180 mm	220 mm	460 m³
0,5 m / 1 m	0,5 m / 1 m / 2 m / 3 m	200 mm	240 mm	560 m³
other lengths on request	other lengths on request	other dimensions on request		

Material strength of between 5 and 40 mm (Standard 20 and 15 mm).

To attain energetic optimisation, we recommend as short a pipe connection as possible and a maxim air speed of <5m/s.



### Installation example

Flexible ISOflexa® pipes, simple and quick to install thanks to connection system. Supply air RED according to building regulation DIN 1946-6.

The supply air valve in the ISOflexa® wall sleeve (see green arrow) opens as soon as the supply air suction engine goes into operation.



According to DIN 1946-6, different air treatments such as supply air, exhaust, circulating air, mixed air or pre-treated air must be installed in the prescribed colours. ISOflexa® pipes and mouldings can also be manufactured in other colours\* such as copper.

\* abovementioned colours upon request

Types of air	Color
supply air	Red
exhaust	Green
circulating	Yellow
mixed air	Orange
pre-treated air	Purple